

46th
ESPEN
CONGRESS



46th ESPEN Congress

on Clinical Nutrition & Metabolism

Milan, Italy • 7-10 September 2024

CLINICAL NUTRITION: "THE" TRANSVERSAL SCIENCE



HOSPITALITY SUITES & MEETING ROOMS

www.espencongress.com

www.espen.org



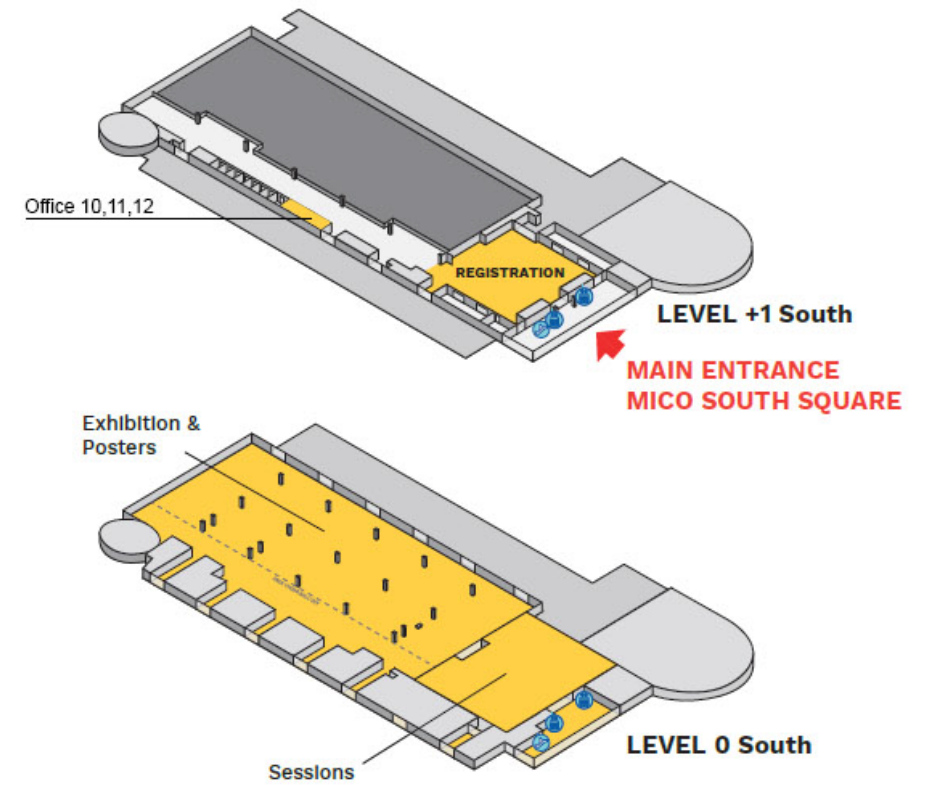
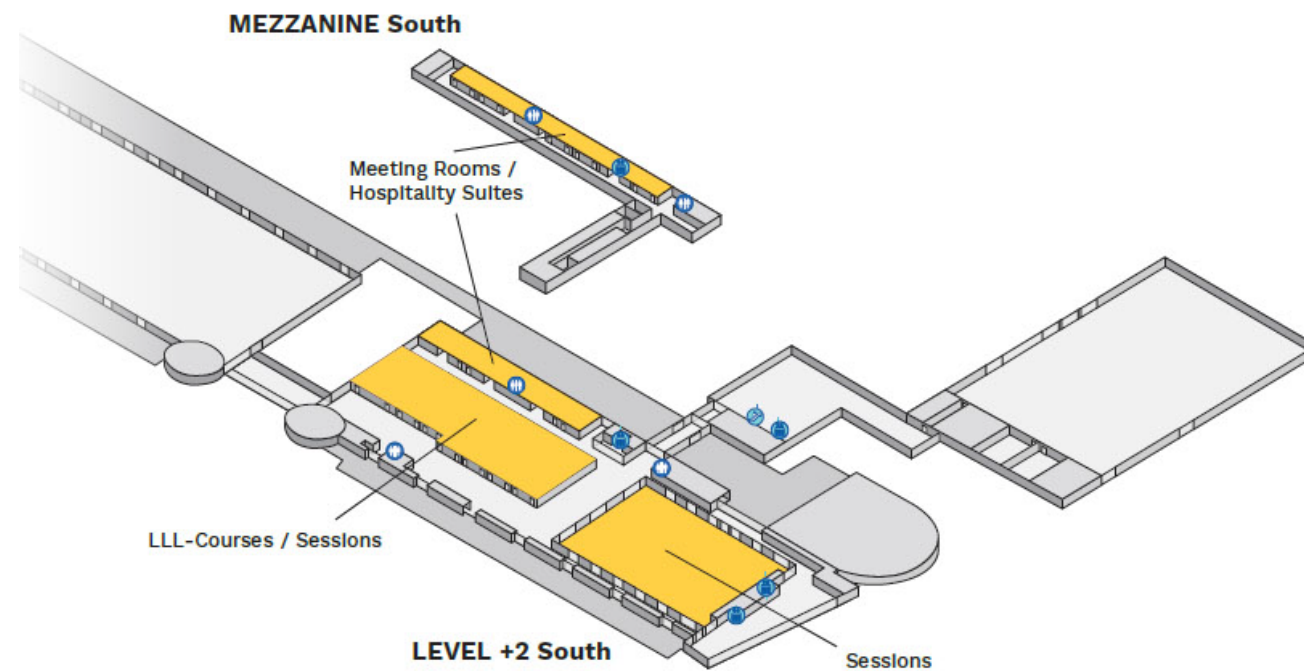
Information and Prices

ROOM	SIZE (SQM)	Dimensions	PRICE PER SQM	HOSPITALITY SUITE RENTAL PRICE 7-10 Sept 24 - VAT excl. (EUR)	Nb of seats Theatre	Nb of seats classroom	Boardroom/ U-shape	Natural Daylight	LOCATION	INCLUDED IN ROOM RENTAL
Suite 3	56.25	2.6hx6.25wx9l	EUR 165.00	EUR 9'281.25	42 seats	25 seats	20 seats	No	Level +2	Chairs, table, n.1 socket
Suite 4	56.25	2.6hx6.25wx9l	EUR 165.00	EUR 9'281.25	42 seats	25 seats	20 seats	No	Level +2	Chairs, table, n.1 socket
Office 10	15.67	3hx4.75wx3.3l	EUR 165.00	EUR 2'585.55			8 seats (10 O-shape)	No	Level +1	Table, chair, locker, coat rack, paper bin and n.1 socket
Office 11	15.67	3hx4.75wx3.3l	EUR 165.00	EUR 2'585.55			8 seats (10 O-shape)	No	Level +1	Table, chair, locker, coat rack, paper bin and n.1 socket
Office 12	15.67	3hx4.75wx3.3l	EUR 165.00	EUR 2'585.55			8 seats (10 O-shape)	No	Level +1	Table, chair, locker, coat rack, paper bin and n.1 socket
Built room 1 - per m2 - bilaminated panels			EUR 225.00					No	Exhibition hall / Level 0	Walls, doors, carpet, Spotlights, Sockets (look at the scheme)
Built room 1 - per m2 - wooden panels			EUR 260.00					No	Exhibition hall / Level 0	Walls, doors, carpet, Spotlights, Sockets (look at the scheme)
Built room 1 - per m2 - noise mitigation			EUR 320.00					No	Exhibition hall / Level 0	Walls, doors, carpet, Spotlights, Sockets (look at the scheme)

No longer available



General Floorplan





Suite 3 / Level +2

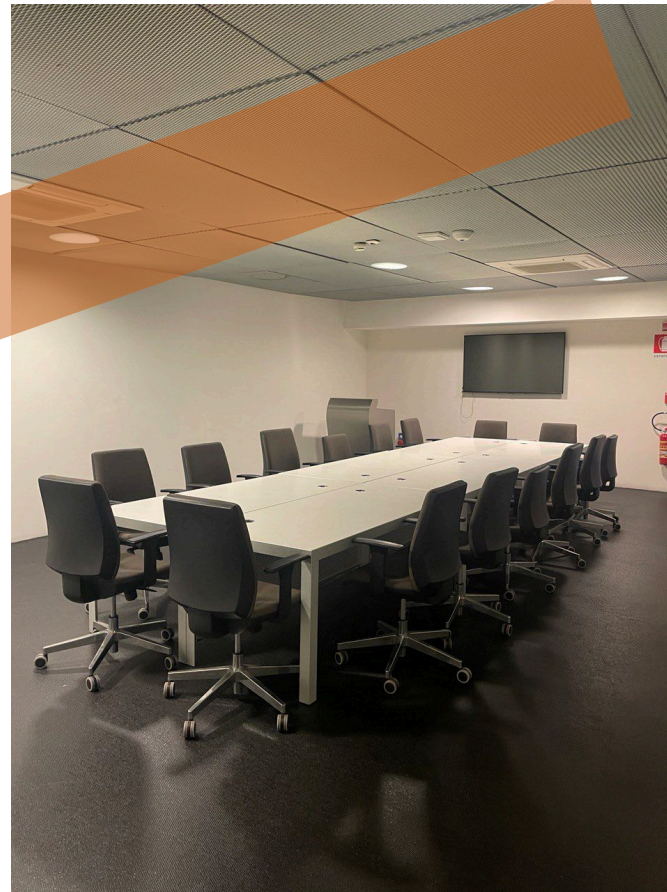


No longer available





Suite 4 / Level +2





Office 10 / Level +1





Offices 11-12 / Level +1 (with connecting door between the two rooms)



Room 11



Room 12

Hospitality suite (example of rooms built in exhibition hall - size subject to sponsor's request and to space availability – **Option with bilaminated panels**)

Bilaminated panels

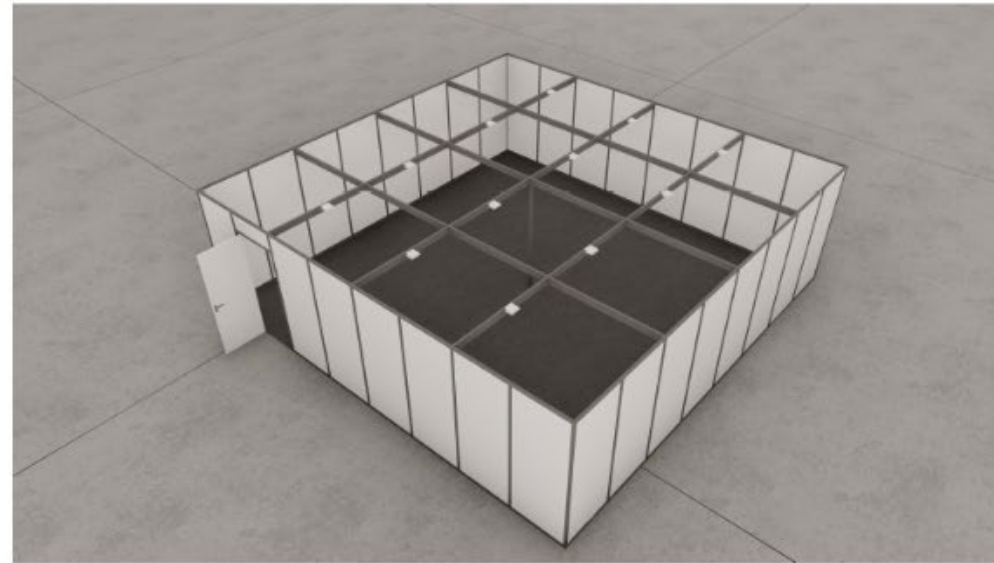
ESPEN 2024 - HOSPITALITY SUITE

Technical description:

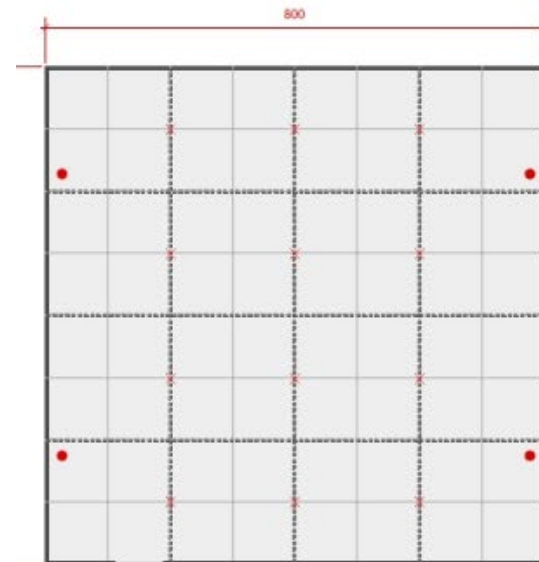
- Backwall with white bilaminated panels, h. 250 cm
- Floor covering carpet (color TBD)
- N.1 lockable door

Electric System:

- N.12 LED spotlights 30W
- N.4 multiple socket up to 2KW

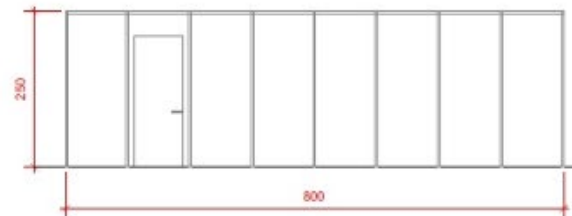


RENDER



PLAN
scale 1:50

- × LED Spotlight 30W
- 1 multiple socket up to 2KW



FRONTAL VIEW
scale 1:50

Hospitality suite (example of rooms built in exhibition hall - size subject to sponsor's request and to space availability – **Option with wooden panels**)

Wooden panels

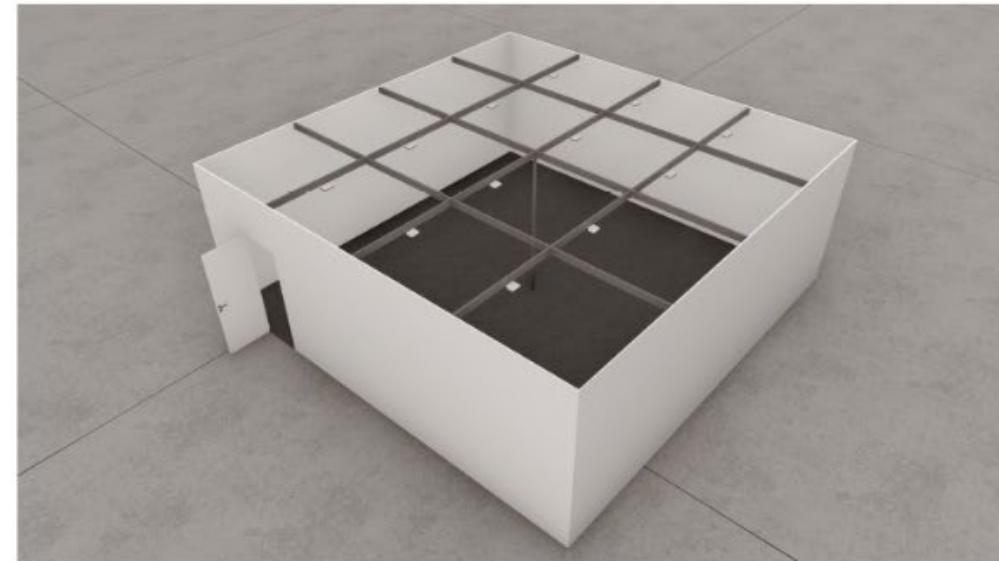
ESPEN 2024 - HOSPITALITY SUITE

Technical description:

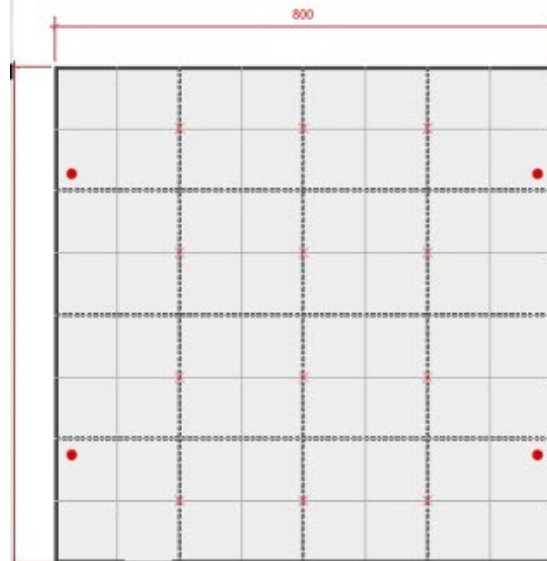
- Backwall with white wooden panels, h. 300 cm
- Floor covering carpet (color TBD)
- N.1 lockable door

Electric System:

- N.12 LED spotlights 30W
- N.4 multiple socket up to 2KW

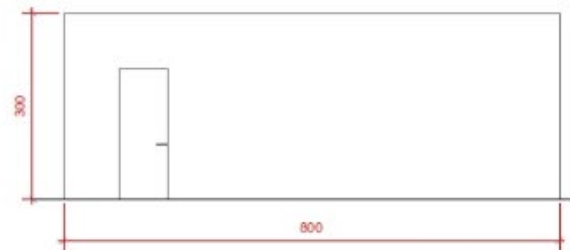


RENDER



PLAN
scale 1:50

- × LED Spotlight 30W
- 1 multiple socket up to 2KW



FRONTAL VIEW
scale 1:50

Hospitality suite example of rooms built in exhibition hall - size subject to sponsor's request and to space availability – **Option with wooden panels (noise mitigation)**

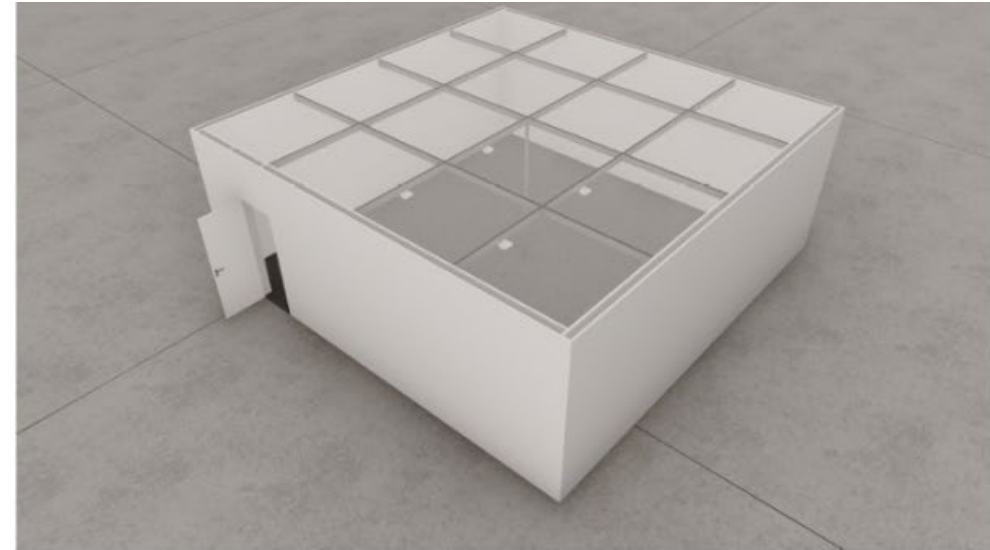
Wooden panels ESPEN 2024 - HOSPITALITY SUITE

Technical description:

- Backwall with double white wooden panels, h. 300 cm
- Floor covering carpet (color TBD)
- N.1 lockable door
- Ceiling with white fabric

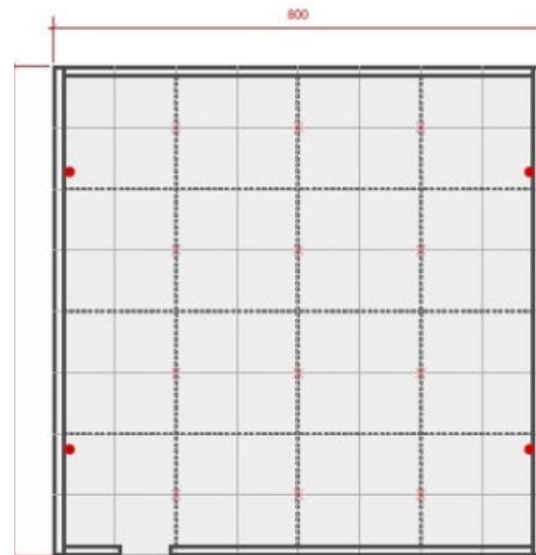
Electric System:

- N.12 LED spotlights 30W
- N.4 multiple socket up to 2KW



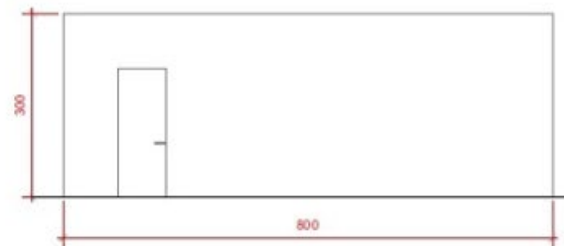
RENDER

NB. The soundproofing is not certified, the materials used don't guarantee a total soundproofing, but only a mitigation of the noise of the pavilion.



PLAN
 scale 1:50

- × LED Spotlight 30W
- 1 multiple socket up to 2KW



FRONTAL VIEW
 scale 1:50