



**FRESENIUS
KABI**

caring for life

ESPEN VIRTUAL CONGRESS 2020

How has COVID-19 changed Nutrition Support: What lessons have we learnt?

Live Virtual Symposium

Sunday, 20 September 2020 | 17:00 – 18:00h CEST

Register today at
www.espencongress.com

Free Live Stream on
www.nutritionevents.com

Chair Prof. Dan Waitzberg, Brazil



Welcome and Introduction

Prof. Dan Waitzberg, Brazil

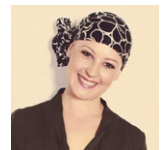
Big Data: Why is Protein important in the critically ill COVID-19 Patient?

Prof. Pierre Singer, Israel



Nutritional Considerations for Post-acute Rehabilitation of COVID-19 Survivors based on recent Clinical Data

Danielle Bear, United Kingdom



COVID-19: Putting Patients at the Center of Nutrition Therapy – Two Patient Cases

Prof. Robert Martindale, United States



Live Q&A